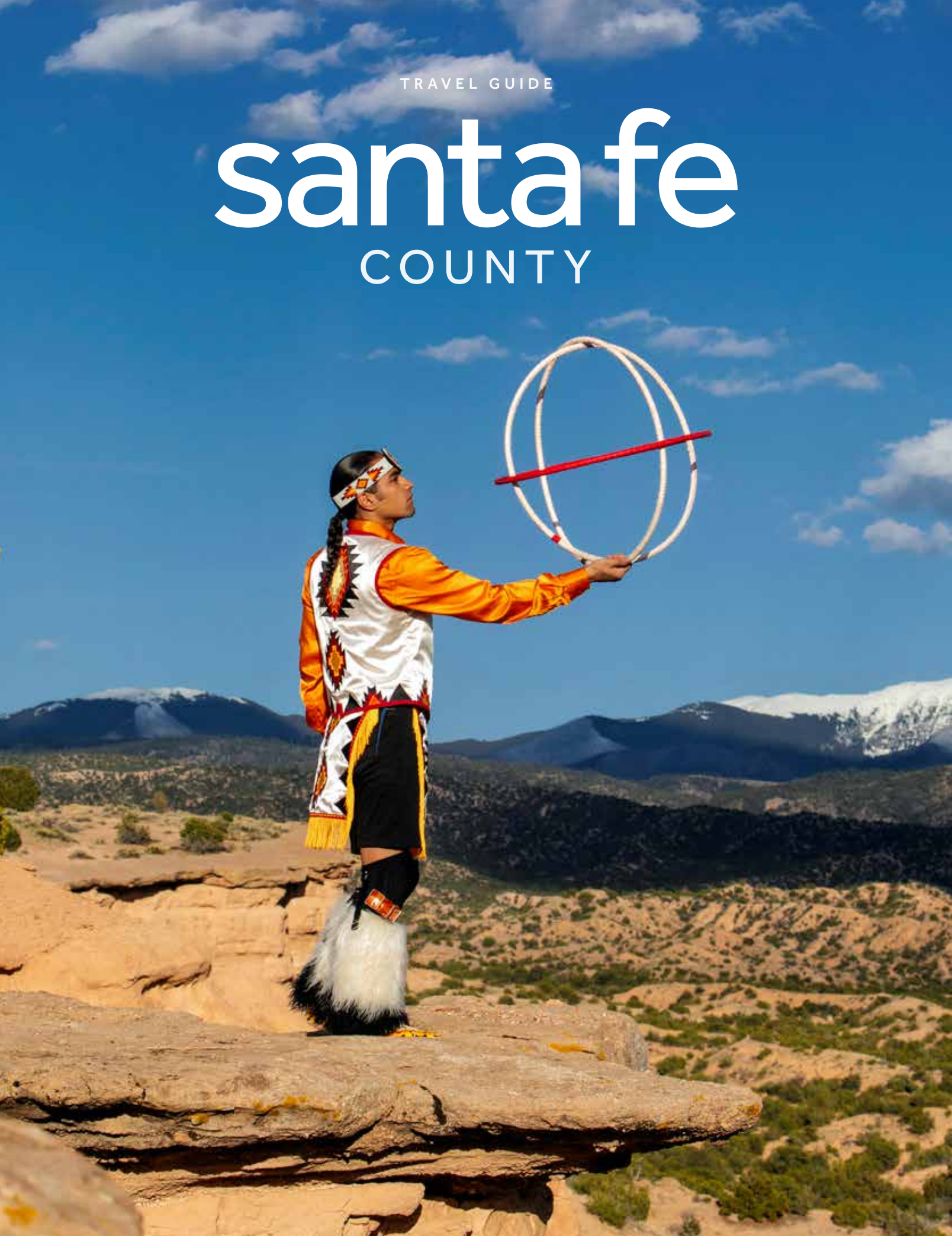




SANTA FE COUNTY

SantaFeNMTrue.com



TRAVEL GUIDE

santa fe

COUNTY



Welcome

CONTENTS

- The Mindful Traveler**..... 1
- The Arts** 2
- Culture** 17
- Cuisine**..... 23
- Hops & Spirits** 29
- Farmers Markets** 32
- Casinos & Gaming**..... 35
- Outdoor Adventures** 37
- Spas & Wellness** 43
- Towns & Villages**..... 46
- Parks, Monuments & Preserves**..... 50
- Getting Around / Map** 55
- Route 66 Centennial**..... 57
- World-Class Events** 60
- Lodging**..... 67
- Local Lingo**..... 75

ON THE COVER

Josiah Enriquez, Lightning Boy Foundation Inc.
2024-2026 Hoop Dance World Champion

Photo by Zoë Marieh Urness

Made possible by:

- The Santa Fe County Board of County Commissioners
- Santa Fe County Manager Gregory S. Shaffer
- Santa Fe County Lodgers' Tax Advisory Board
- Santa Fe County Community Development Department
- Santa Fe County Tourism & Marketing
- SUNNY505



SANTA FE COUNTY

SantaFeNMTrue.com



The hoops start as simple circles. Then the dance begins and they come to life — an eagle, a butterfly, a flower, the sun. On earth, as it is in my dance, everything is connected. Tradition teaches the movement, but inside the circle I bring my own ideas and my own story. When I dance, I'm not just performing — I'm sharing that connection with the people watching and with the Lightning Boy dancers who will carry the circle forward.

—Josiah Enriquez
Lightning Boy Foundation Inc.

Photo by Leah Kolakowski

Hoop Dancers at Annual Youth Hoop Dance Championship in Santa Fe, NM. Lightning Boy Foundation, Inc.



Walking trails that wind through piñon trees, your feet crunching in the forest floor below, the sky is robin's egg blue, the wind whispers through the trees, and you are reconnected to the natural cadence of life. Santa Fe County offers a plenitude of opportunities to unplug; to ground yourself in the moment. This place is called the Land of Enchantment for good reason; it's all about embracing a slower pace that calls for presence. Indigenous cultures have lived and thrived in New Mexico for thousands of years, maintaining a sacred relationship of reciprocity with the land. Take a note from Native American culture and treat nature like the precious friend it is. Respect the trails, leave no trace, and take with you only memories (and as many pictures as you want).

The Arts

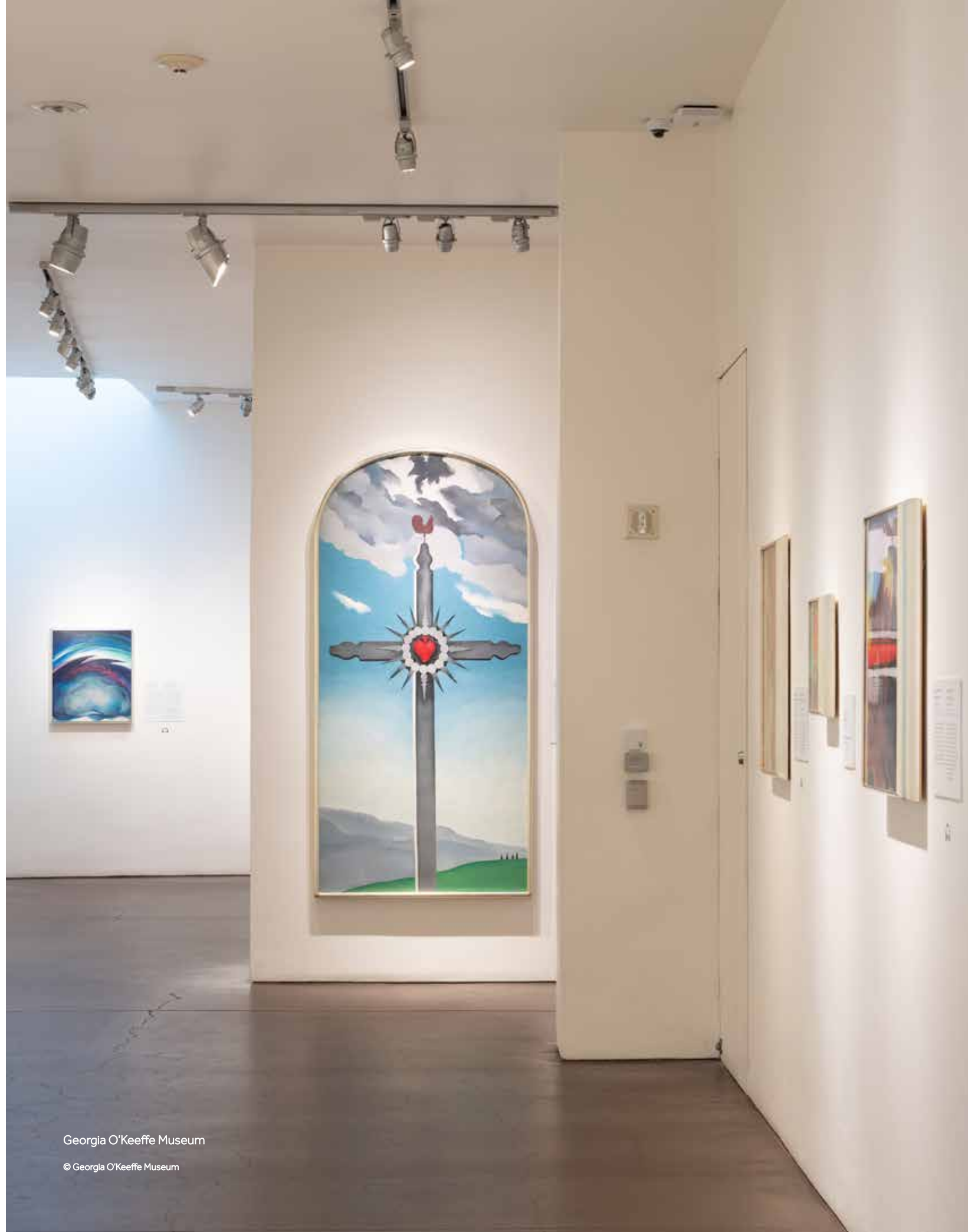
From the ethereal paintings of terracotta hills by Georgia O'Keeffe, to sculptures of Indigenous mothers by Chiricahua Apache artist Allan Houser, and charcoal black ceramics by San Ildefonso potter Maria Martinez, the land and ways of life in Santa Fe County have long been home and inspiration to creatives of every kind. No matter the medium or tradition, there's something extra special about seeing works in the place they were made. The experience gives viewers a deeper understanding of the artistic process, a peek into the artist's mind.

With sculpture gardens, serene galleries and renowned museums, Santa Fe County abounds with art and unique ways to witness it. Along

with iconic artists, new cohorts of emerging artists blossom. The Institute of American Indian Arts, started by Cherokee fashion designer Lloyd Kiva New in the 1960s, fosters creativity and nurtures artists who are expanding the boundaries of their mediums. Meow Wolf has reshaped the way people think about installation works; about how to interact with and engage their audiences. Countless workshops, retreats, and artist-in-residence programs in Santa Fe County assure that the work created now, and in the future, will hold spaces as important as those that have come before them.



Allan Houser Sculpture
Garden & Gallery



Georgia O'Keeffe Museum

© Georgia O'Keeffe Museum

SANTA FE

GEORGIA O'KEEFFE MUSEUM

This world-renowned museum exhibits iconic artist Georgia O'Keeffe's work and offers insight into her creative process.

- okeeffemuseum.org
- 217 Johnson St.

MEOW WOLF

The original Meow Wolf location, this wildly imaginative, immersive "House of Eternal Return" for all ages combines technology with explorable environments created by a collaboration of more than 100 artists.

- meowwolf.com
- 1352 Rufina Circle

MUSEUM OF INDIAN ARTS & CULTURE

Devoted to Native cultures and the anthropology and archaeology of the greater Southwest, this museum shares stories from prehistory through contemporary art.

- indianartsandculture.org
- 710 Camino Lejo

CERRILLOS

CASA GRANDE TRADING POST, PETTING ZOO & CERRILLOS TURQUOISE MINING MUSEUM

A treasure trove of Cerrillos turquoise, rocks and minerals, this adobe hacienda also offers a museum devoted to turquoise mining and a petting zoo.

- casagrandetradingpost.com
- 17 Waldo St.

LA CIENEGA

EL RANCHO DE LAS GOLONDRINAS, THE SOUTHWEST'S LIVING HISTORY MUSEUM

Experience life in early New Mexico at this acclaimed living history museum, with 18th-century colonial buildings, costumed villagers and annual festivals celebrating music, dance, food and culture.

- golondrinas.org
- 334 Los Pinos Rd.

CHIMAYÓ

CHIMAYÓ HISTORY MUSEUM

Inside the former home of the Ortega weaving family, the museum chronicles Chimayó's rich history with photographs and artifacts documenting the daily lives, work and faith of the people of Chimayó.

- chimayomuseum.org
- Plaza del Cerro

POJOAQUE

POEH CULTURAL CENTER & MUSEUM

The Poeh Museum celebrates the arts and culture of the Pueblo People with changing exhibitions, and more than 600 artifacts, including jewelry, pottery, textiles, figurines made by artist Roxanne Swentzell, as well as a permanent Smithsonian exhibit.

- poehcenter.org
- 78 Cities of Gold Rd.

SANTA FE (continued)

MUSEUM OF INTERNATIONAL FOLK ART

The world's largest collection of international folk art is a joy to explore, with more than 135,000 artifacts from some 100 countries.

- moifa.org
- 706 Camino Lejo

MUSEUM OF SPANISH COLONIAL ART

With 3,000 treasures of New Mexican Hispanic art and art from each of the Spanish colonies, this museum takes visitors on a journey from the Middle Ages to the New Millennium.

- spanishcolonial.org
- 750 Camino Lejo

NEW MEXICO CAPITOL ART COLLECTION

Visit the Capitol building to explore the eclectic collection leaders from the State of New Mexico get to experience everyday.

- nmcapitolart.org
- 411 State Capitol

NEW MEXICO HISTORY MUSEUM

With thousands of objects, photographs and documents, this museum explores the rich, dynamic history of New Mexico.

- nmhistorymuseum.org
- 113 Lincoln Ave.

NEW MEXICO MILITARY MUSEUM

Housed in the Armory where the 200th Coast Artillery Regiment was processed for service in 1941 before deployment to the Philippine Islands in World War II, the museum chronicles the tragic Bataan Death March and includes the history of the Civil War's Battle of Glorieta Pass.

- newmexicomilitarymuseum.com
- 1050 Old Pecos Trail

NEW MEXICO MUSEUM OF ART

Explore the diversity of the visual arts and the legacy of New Mexico as a cultural crossroads.

- nmartmuseum.org
- Plaza Building: 107 West Palace Ave.
- Vladem Contemporary: 404 Montezuma Ave.

PALACE OF THE GOVERNORS

Built in the early 17th century as Spain's seat of government for what is today the American Southwest, the Palace of the Governors chronicles the rich history of Santa Fe, as well as New Mexico and the region.

- nmhistorymuseum.org
- 113 Lincoln Ave.

SANTA FE CHILDREN'S MUSEUM

This delightful museum offers a dynamic, hands-on, exploratory environment so that children and families can discover the joys of learning, play and community.

- santafechildrens museum.org
- 1050 Old Pecos Trail

SITE SANTA FE

Site Santa Fe is a dynamic, interdisciplinary, non-collecting contemporary arts institution placing artists at the center and exploring extraordinary ideas through innovative exhibitions and programs.

- sitesantafe.org
- 1606 Paseo de Peralta

THE IAIA MUSEUM OF CONTEMPORARY NATIVE ARTS

The country's only museum that exhibits, collects and interprets the work of contemporary Native artists.

- iaia.edu/mocna
- 108 Cathedral Place

WHEELWRIGHT MUSEUM OF THE AMERICAN INDIAN

View changing exhibitions of contemporary and historic Native American art emphasizing the Southwest.

- wheelwright.org
- 704 Camino Lejo



**NORTHERN
SANTA FE COUNTY**

**CENTINELA
TRADITIONAL ARTS**

This renowned shop features blankets, rugs and other items handcrafted by weavers in the Rio Grande weaving tradition of northern New Mexico and the American Southwest.

- chimayoweavers.com
- 946 NM 76

**EL POTRERO TRADING
POST (Vigil Store)**

Next to El Santuario de Chimayó, you'll find folk art, religious articles, and New Mexico's green and red chile, including, tin crosses, milagros, and containers for the Santuario's sacred earth.

- potrerotradingpost.com
- 17A Santuario Rd.,
Chimayó

**GLENN GREEN
GALLERIES &
SCULPTURE GARDEN**

The gallery and expansive sculpture garden exhibits a wide range of work by over 40 artists, ranging from Allan Houser's sculptures to the Rainforest Basketry of the Wounaan.

- glenngreengalleries.com
- 136 Tesuque Village Rd.

**NAMBÉ TRADING
POST/MUSEUM
OF WESTERN FILM
& COSTUME**

This historic Old West trading post offers Navajo weavings, Pueblo pottery, old pawn jewelry, and other treasures, as well as Western movie costumes and props.

- nambetradingpost.com
- 20 Summer Rd.

**ORTEGA'S
WEAVING SHOP**

Iconic clothing, rugs, blankets and other weavings produced at this venerable shop are rooted in eight generations of traditional northern New Mexico weavers.

- ortegasweaving.com
- 53 Plaza Del Cerro

TESUQUE GLASSWORKS

The gallery showcases colorful and diverse works of blown glass, along with tours, glassblowing demos and glassblowing lessons.

- tesuqueglass.com
- 1510 Bishop's Lodge Rd.

THE POEH GALLERY

The gallery inside the Poeh Cultural Center and Museum is brimming with jewelry, micaceous pottery and other traditional Pueblo art forms, including drums and moccasins.

- poehcenter.org
- 78 Cities of Gold Rd.

**SOUTHERN
SANTA FE COUNTY**

**ALLAN HOUSER
SCULPTURE GARDEN
AND GALLERY**

Monumental sculptures by America's preeminent Native American artist in a serene sculpture park, with smaller sculptures, paintings and drawings exhibited in the indoor gallery.

- allanhouser.com/
sculpture-garden
- #26 Haozous Rd.

**ORIGAMI IN
THE GARDEN**

Artists Jennifer and Kevin Box's renowned large-scale sculptures of flying birds, emerging butterflies, floating boats and soaring paper airplanes are inspired by the ancient art of origami.

- origamiinthegarden.com
- 3453 NM 14

PAUL OLSEN GALLERY

An eclectic gallery in a historic mining town, this intimate space represents work by contemporary artists Carl Apfelschnitt, Gregory Botts, Stephen Hale, Carlos Cruz-Diez, David Kapp and Shelly Johnson.

- 2850 NM 14

**SEPPANEN &
DAUGHTERS
FINE TEXTILES**

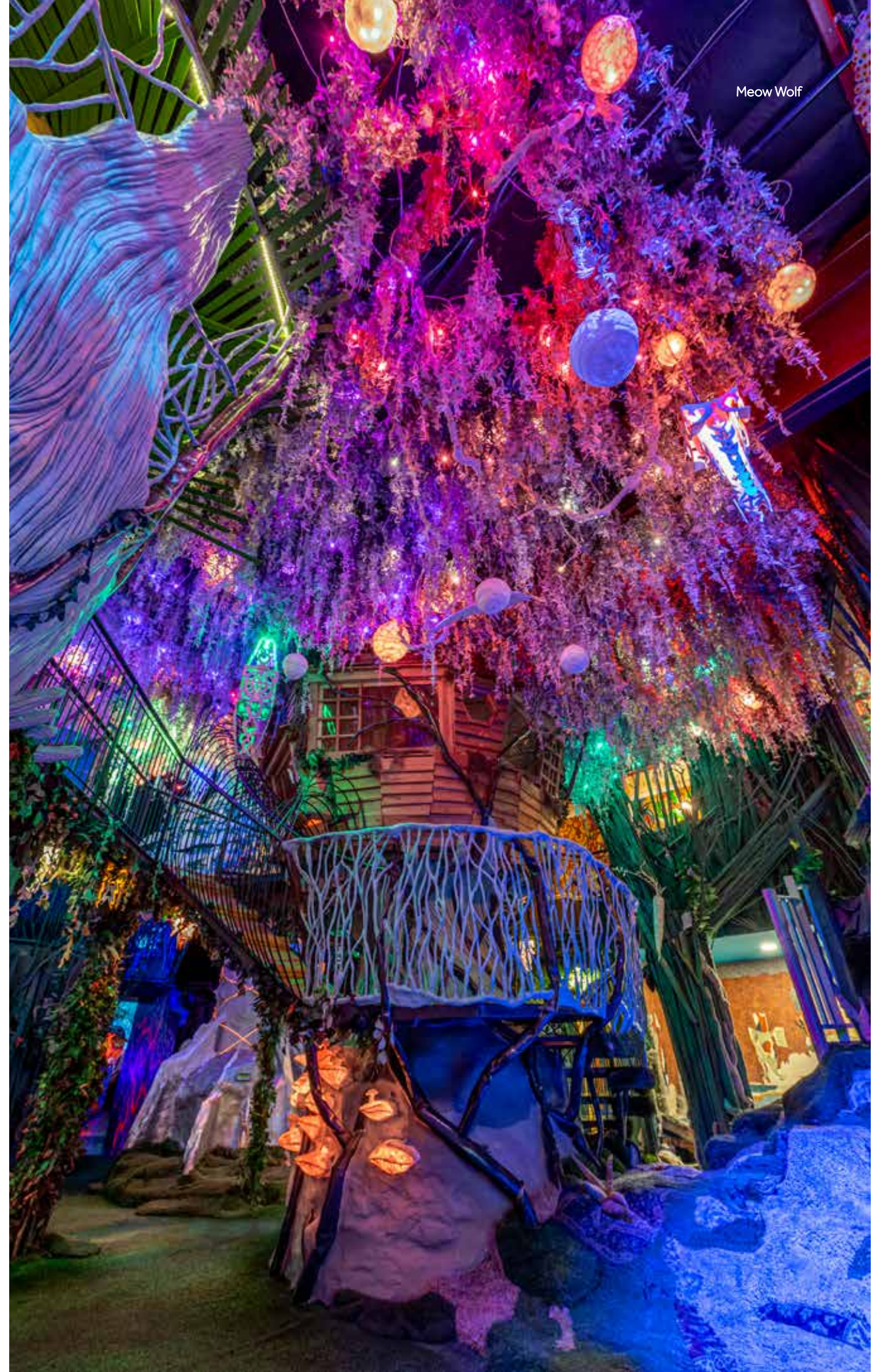
Wondrous weavings from Tibet, Afghanistan and Morocco, along with Navajo and Zapotec textiles, take visitors on a virtual global trek.

- finetextiles.com
- 2879 NM 14

CANYON ROAD

This iconic street features some of the region's best art. Take a stroll and experience the hundreds of eclectic galleries, art collections, boutiques and restaurants that call this charming area home.

- visitcanyonroad.com



Meow Wolf

JUNE

**SANTA FE
STUDIO TOUR**
sfestudioart.com

SEPTEMBER

**ELDORADO
ART TOUR**
eldoradoarts.org

**HIGH ROAD
ART TOUR**
highroadnewmexico.com

TAOS STUDIO TOUR
taosstudiotour.org

**TURQUOISE TRAIL
STUDIO TOUR**
turquoisetrailstudiotour.com

OCTOBER

**ABIQUIU
STUDIO TOUR**
abiquiustudiotour.org

**GALISTEO
STUDIO TOUR**
galisteostudiotour.org

**PECOS VALLEY
ARTISANS
STUDIO TOUR**
pecosstudiotour.com

NOVEMBER

**DIXON
STUDIO TOUR**
dixonarts.org



Immerse yourself in the vibrant artistic culture of Northern New Mexico by embarking on an unforgettable artist studio tour. Art enthusiasts and cultural explorers alike will find themselves captivated by the unique and one-of-a-kind art pieces, including exquisite jewelry that tells a story of its own. Each studio offers a rare glimpse into the creative process, allowing you to engage directly with local artisans who are masters of their craft.

Origami in the Garden, Turquoise Trail Studio Tour



Santa Fe “LIVE”

Santa Fe has a long, colorful history in the performing arts. Theater, film, dance, opera, and literary storytelling have always—and still do—thrive here.

Theater groups put on everything from one-woman shows to large annual productions. The Santa Fe Opera House is world-renowned, premiering new, innovative operas alongside classics every summer. The landmark venue also offers a wide range of diverse non-operatic offerings in its open-air theater. With venues like Santa Fe Playhouse championing the Little Theatre Movement since its inception in the early 1900s, and the Lensic Performing Arts Center, an iconic theater that has been part of the Santa Fe skyline since 1931, Santa Fe County packs a big performance punch.

It's a place where you can seize serendipity and simply stumble upon an array of great performances. The music scene offers a vibrant soundscape. Enjoy lively summer nights at the Plaza Bandstand, or more intimate gigs at the eclectic array of bars and grills. The Bridge at Santa Fe Brewing Company is a top spot for concerts, offering great tunes, award-winning brews, and mountain views. Jazz, rock, country, whatever you fancy, is sure to be found. Indulge in the timeless beauty of classical music at the St. Francis Auditorium in

the New Mexico Museum of Art. Architectural wonders like the Loretto Chapel provide the perfect backdrop for musical enchantment. Literary Festivals abound, offering opportunities to hear local, national and international voices, from author Hampton Sides, to poet Natachee Momaday Gray, to essayist Marin Sardy. Writers flock to Santa Fe from every corner of the globe.

For a more profound cultural encounter, Santa Fe County provides an abundance of opportunities to delve into rich tapestries of artistic expression. Indigenous dancers perform on the plaza, showcasing ceremonial traditions in the city's center, and there are seasonal dances at the pueblos, some of which welcome visitors at any given time of year. Shakespeare performances occur among the lush foliage of the Santa Fe Botanical Gardens. Santa Fe County is filled with many opportunities for total immersion in the arts.

**BUFFALO THUNDER
RESORT CASINO**

Visitors can expect top notch acts year-round at one of the region's premier casinos.

- hiltonbuffalo
thunder.com
- 20 Buffalo Thunder Trail

**ENGINE HOUSE
THEATER**

Enjoy live music every weekend while exploring the historic Turquoise Trail National Scenic Byway and grab a bite to eat at the Mine Shaft Tavern before the fun commences.

- themineshafttavern.
com/engine-house-
theatre
- 2846 NM 14

MEOW WOLF

One of Santa Fe's most unique venues allows visitors to experience live music while surrounded by surreal art.

- meowwolf.com/
visit/santa-fe
- 1352 Rufina Circle

SKY RAILWAY

The rhythmic clatter of the train wheels becomes the backdrop to the soul-stirring melodies of live local musicians, echoing through the picturesque landscape.

- skyrailway.com/music
- 430 W Manhattan Ave.

**ST. FRANCIS
AUDITORIUM**

A community staple since 1917, this auditorium in the New Mexico Museum of Art features lectures, concerts and recitals.

- nmartmuseum.org
- 107 West Palace Ave.

**THE BRIDGE AT
SANTA FE BREWING
COMPANY**

Enjoy gorgeous views and delicious brews. This multi-purpose facility features live music year-round.

- santafebrewing.com
- 37 Fire Place

**THE CENTER FOR
CONTEMPORARY ARTS**

A community-based arts center featuring cinema, chamber music, theater, contemporary art and weekly events.

- ccasantafe.org
- 1050 Old Pecos Trail

THE LENSIC THEATER

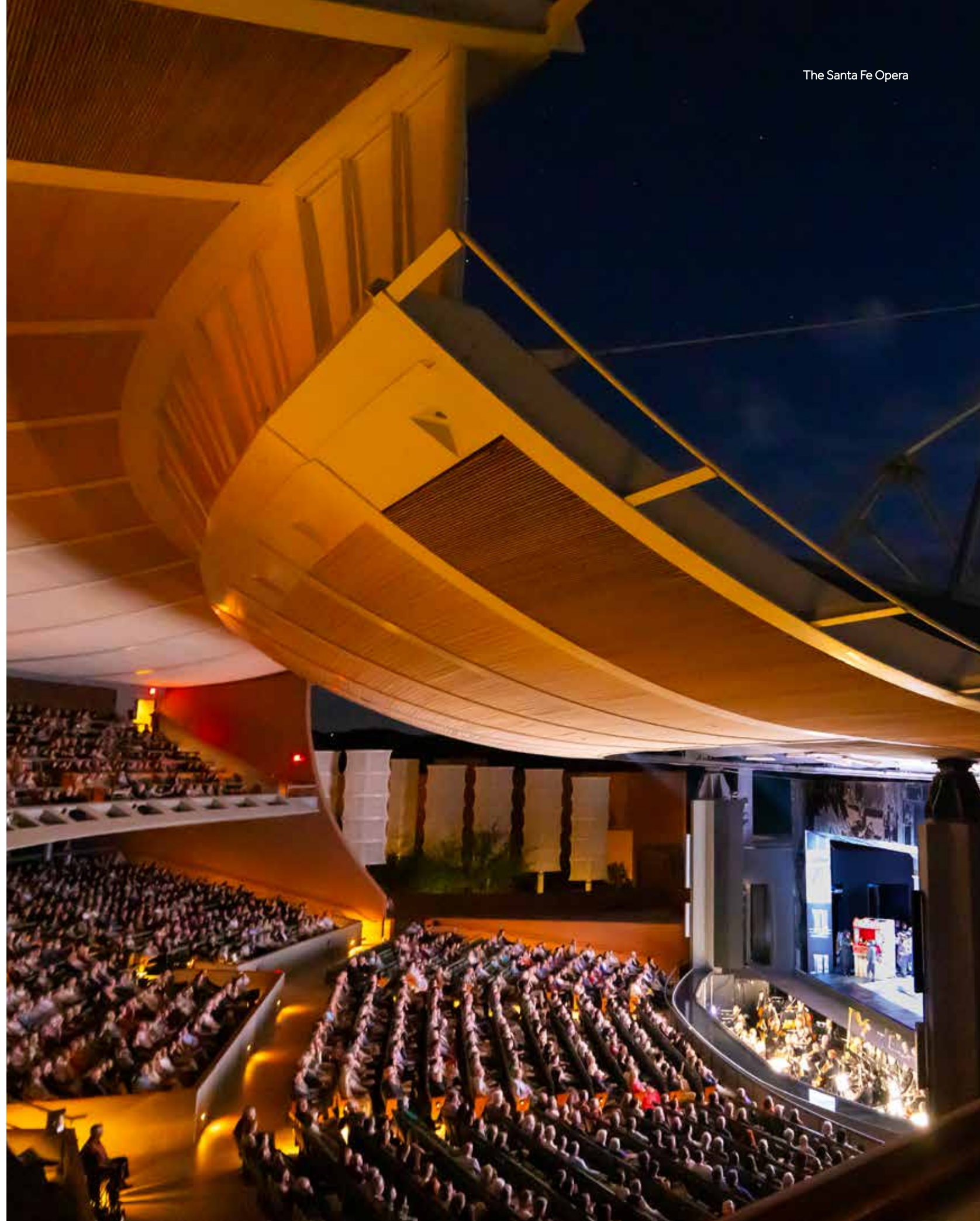
This historic theater opened in 1931, as a vaudeville stage and movie palace. Today it is a thriving performing arts center in the heart of Santa Fe.

- lensic.org
- 211 W. San Francisco St.

THE SANTA FE OPERA

This eminent opera house hosts one of the world's leading summer festivals, held in the stunning open-air Crosby Theatre and surrounded by the dramatic foothills of the Rockies—a world-renowned summertime event..

- santafeopera.org
- 301 Opera Drive





La Emi of Emi Arte Flamenco,
El Rancho de Las Golondrinas

Discover the Warmth of Our Heritage.

A unique confluence of cultures, some older than history books, call Santa Fe County home. From adobe houses that date back hundreds of years to pueblos that date back thousands, the area resonates with the blended heritage of its inhabitants, leaving an indelible impression on every visitor.

Notice examples of Indigeneity in the food, architecture, and artworks. Listen to the poetic cadence of Spanish, including dialects spoken only in Northern New Mexico. Inhale the delicate fragrance of lavender, believed to have been brought in the vestments of French Catholic Jean Baptiste Lamy, who later served as the Archbishop of Santa Fe. Admire Diné weavings, often honored in fashion and interior design. Santa Fe County is home to an abundance of cultures, and the tangible expressions of heritage interweave tradition, diversity, and



George Rivera Studio, Pueblo of Pojoaque

modernity, enlivening the destination's distinct allure.

Exploring Indigenous and Spanish destinations in Santa Fe, including pueblos, museums, and cultural centers, offers visitors a chance to engage distinctive histories, languages, and traditions. Santa Fe County is an exceptionally special locale to explore.



EL RANCHO DE LAS GOLONDRINAS

Located on 500 acres in a rural farming valley south of Santa Fe, this living history museum features historic buildings and costumed interpreters who will teach you about life in the 18th and 19th centuries. The annual season runs June through October, with festivals, live music and cultural events.

- golondrinas.org
- 334 Los Pinos Rd.



San Miguel Chapel



El Rancho de Las Golondrinas

Photo by Jane Phillips Photography

SAN MIGUEL CHAPEL

Built in 1610 by Tlaxcalan Indians from Mexico who traveled with Spanish settlers to New Mexico, this chapel has a rich history. It remains the oldest continuously used church in the United States.

- sanmiguelchapelsantafe.org
- 401 Old Santa Fe Trail



EL SANTUARIO DE CHIMAYÓ

El Santuario de Chimayó is considered one of the truly holy places in America. Several cultures and faiths believe that the site has miraculous healing powers. The church draws thousands of people each year who pilgrimage during Holy Week.

- holychimayo.us
- 15 Santuario Dr.

El Santuario de Chimayó

PUEBLOS OF NORTHERN NEW MEXICO

COCHITI PUEBLO

K'úutiim'é – People from the mountains.

• cochiti.org

NAMBÉ PUEBLO

Nanbé Owingeh – People of the round earth.

• nambepueblo.org

OHKAY OWINGEH

O'ke – Place of the strong people.

• newmexico.org/native-culture/native-communities/ohkay-owingeh-pueblo/

PICURIS PUEBLO

Pin, wel, ene – Those who paint.

• picurispueblo.org

POJOAQUE PUEBLO

P'o-suwae-geh Owingeh – Water drinking place village.

• pojoaque.org

SAN IDELFONSO PUEBLO

Po-Woh-Geh-Owingeh – Where the water cuts through.

• sanipueblo.org

SANTA CLARA PUEBLO

Kha'P'o – People of the valley of the wild roses or Kha'P'o singing water.

• santaclarapueblo.org

SANTO DOMINGO PUEBLO

Also known as *Kewa* – Keresan language

• santodomingopueblo.com

TAOS PUEBLO

Place of the Red Willows.

• taospueblo.com

TESUQUE PUEBLO

Tat' unge'onwi – Narrow place of the cottonwood trees.

• tesuquepueblo.org



As part of the Northern New Mexico region, Santa Fe County is steeped in the rich cultural heritage of its pueblos, each uniquely shaped by centuries of tradition and resilience. The Tesuque and Pojoaque Pueblo communities, with their deep-rooted traditions, offer a window into Native American life and spirituality. Adjacent to the county, Taos Pueblo is renowned as a UNESCO World Heritage Site. Pueblos are simultaneously historical landmarks and living embodiments of historic artistry in pottery, weaving, and jewelry-making, showcasing a profound connection to the land and its rhythms. As visitors explore the sacred grounds, they are invited to witness a harmonious blend of ancient rituals and contemporary life, honoring the enduring legacy of the Puebloans. Each pueblo in Northern New Mexico stands as a sovereign nation, preserving its unique culture, traditions, and governance. Visitors are encouraged to recognize and respect this sovereignty as they explore these communities. Contact individual pueblos directly before visiting in case of closures.



Mateo Ulibarri, 4-time Teen World Hoop Dance Champion, Lightning Boy Foundation, Inc.



Heat Meets Harmony

Be sure to bring your appetite. This world-class dining destination offers something for everyone, whether you're hungry for traditional New Mexican cuisine, Japanese small plates, BBQ big plates or the iconic green chile cheeseburger. Quench your thirst at a local craft brewery or tap room. For years, the James Beard Foundation has handed out prestigious awards in this culinary capital, and The Food Network has filmed so many episodes on location, we've lost track. Like Guy Fieri of "Diners, Drive-ins and Dives," you'll keep coming back to savor the delicious diversity of our restaurants.



NORTHERN SANTA FE COUNTY

ARROYO VINO RESTAURANT AND WINE SHOP

Pair seasonal fare made with fresh ingredients from the kitchen garden with wine from a selection of 900 bottles in their wine shop.

- arroyovino.com
- 218 Camino La Tierra

BISHOP'S LODGE, AUBERGE RESORTS COLLECTION:

- ◆ SkyFire Restaurant
At Bishop's Lodge, set at the base of the Sangre de Cristo Mountains, SkyFire offers wood-fired cooking and New Mexican flavors—inside and out. The fireside bar and lounge serve craft cocktails and elevated Southwestern fare.
- ◆ Two Dogs Cafe
This bright, cozy, and calming café offers mountain views and local art. Enjoy pastries, sandwiches, craft coffee, salads, and cold-pressed juices to fuel your adventures.
- auberge.com/bishops-lodge/dine
- 1297 Bishops Lodge Rd.

BLAKE'S LOTABURGER

Breakfast burritos and sandwiches and the original green chile cheeseburger for takeout.

- lotaburger.com/locations/70-cities-of-gold-rd-santa-fe-nm-85/
- 70 Cities of Gold Rd.

CONNIE'S KITCHEN

Connie's Kitchen offers more than just food; it provides a journey into the heart of Southwestern cuisine.

- connieskitchennm.com
- 17730 US-84, Nambé Falls Travel Center

EL NIDO

A historic 1920s roadhouse, this restaurant serves steaks, seafood, pasta, and wood-fired pizza. Dine by the cozy kiva fireplace or on the patio.

- ◆ **Su Sushi**, located in the historic El Nido, offers an omakase-style sushi dining experience.
- elnidosantafe.com
- 1577 Bishops Lodge Rd., Tesuque

EL PARASOL

Since 1958, this family-owned restaurant, now with six locations, has served the tasty, traditional foods of northern New Mexico and Mexico, including tacos, tamales and burritos.

- elparasol.com/pojoaque
- 30 Cities of Gold Rd., Pojoaque

FOUR SEASONS RESORT RANCHO ENCANTADO SANTA FE

- ◆ Terra
The flavours of northern New Mexico are on display where global influences meet regional delights. With elegant and inventive cuisine, the sophisticated restaurant is backdropped by iconic mountain views in a sumptuous setting.

- ◆ The Bar
After a long day of exploring or pampering (or both), settle in at The Bar and enjoy one of their delicious, signature cocktails, or choose from their extensive wine list. We'll save you a seat around the fire.

- fourseasons.com/santafe/dining
- 198 NM, 592, Tesuque

FUSION TACOS

Authentic Mexican Cuisine with the bold flavors of Sonora and culinary traditions of Jalisco serving mesquite-grilled meats and street-style specialties

- fusiontacosnm.com
- 10 Cities of Gold Rd., at Cities of Gold Casino, Pojoaque

GABRIEL'S

Delight in the specialties of Southwest and Old Mexico, including guacamole made table-side and refreshing margaritas, perfect for savoring on the romantic garden patio.

- gabrielsofsantafe.com
- 4 Banana Ln.

HILTON SANTA FE BUFFALO THUNDER RESORT & CASINO:

- ◆ Pueblo Deli
A snack bar and deli serving breakfast burritos, coffee and hot and cold sandwiches.

BUFFALO THUNDER (continued)

- ◆ Iguana Café
Serving breakfast and lunch featuring appetizers, salads, sandwiches and burgers and many New Mexican specialties.

- ◆ Turquoise Trail Bar & Grill
Located inside the casino, this grill serves New Mexico inspired sandwiches, burgers and fries, salads and nachos along with margaritas and other beverages.

- ◆ Red Sage
Savor a steak finished to perfection in a wood-fired oven. Steaks, seafood, and other fare feature local produce from Pojoaque Pueblo's Tewa Farms.

- ◆ Towa Grill (at Towa Golf Course)
For your early morning tee time, stop in for a Grab n' go breakfast burrito. When you're ready for a casual lunch, an array of salads, sandwiches, and snacks are perfect.

- www.hiltonbuffalothunder.com/amenities/dining
- 20 Buffalo Thunder Trail



Rancho de Chimayó

IZANAMI RESTAURANT

Enjoy eclectic Japanese bar food and artisanal microbrew cold sake at a Japanese-style mountain spa. Small plates include Wagyu Beef Ishigaki, cooked on a hot stone at your table.

- tenthousandwaves.com/food
- 21 Ten Thousand Waves Way, at Ten Thousand Waves

LA FONDA DEL SOL

A small café featuring Mexican favorites. Located near the historic El Santuario de Chimayó.

- 04-A Medina Ln, Chimayó

PIZZA ETC.

Fresh pizzas and salads in a family-friendly atmosphere. Gluten free and vegan options.

- pizzaetc.com
- 68 Cities of Gold Rd., Pojoaque

RANCHO DE CHIMAYÓ

Winner of the James Beard Foundation America's Classic award, this family-run favorite serves traditional New Mexican dishes. Try the hand rolled tamales and chile rellenos.

- ranchodechimayo.com
- 300 Juan Medina Rd.

SOPAIPILLA FACTORY

A family-friendly gathering place with flavorful cuisine inspired by northern New Mexico. Don't miss the signature stuffed sopaipillas.

- sopaipillafactory.com
- 7 W. Gutierrez St.

NORTHERN SANTA FE COUNTY (continued)

TESUQUE CASINO

◆ Cottonwood Kitchen
The Cottonwood Kitchen Dining Room features an inspired menu, welcoming environment and an exhibition kitchen. The menu is filled with regional favorites.

◆ Cottonwood Bar & Lounge

Comfortable couches and easy chairs make it a great place to watch sports or live entertainment.

◆ Grab & Go

Freshly prepared sandwiches, salads, pastries, cookies, hot dogs, nachos and Frito pie are all part of the menu.

- tesuquecasino.com
- 7 Tesuque Rd.

TESUQUE VILLAGE MARKET

The heart of Tesuque since 1989, this bustling market, restaurant, and bar serves wood-fired pizzas, classic New Mexican dishes, and favorites—tortilla soup, salads, and burgers. Save room for house-made desserts from the bakery.

- tesuquevillagemarket.com
- 138 Tesuque Village Rd.

TOTEMOFF'S BAR & GRILL

Stop by and warm up with a hot chocolate or signature warm cocktail. Grab a green chile cheeseburger from the grill or green chile stew and take part in some apres-ski at Totemoff's. Open seasonally.

- skisantafe.com
- 1477 NM-475, Ski Basin at Ski Santa Fe

SOUTHERN SANTA FE COUNTY

BEER CREEK BREWING COMPANY

On the north end of the Turquoise Trail in the San Marcos Lone Butte area, Beer Creek Brewing Company serves up pizza, sandwiches, salads, and desserts, all crafted on-site. Savor the ambiance of this historic building and its charming patio.

- beercreekbrew.com
- 3810 NM 14

BLACK BIRD SALOON

Housed in an 1880s saloon in the old mining town of Cerrillos, this rustic restaurant serves up great grub focused on the highest quality meats and ingredients with some vegetarian options. This is a must stop on the Historic Turquoise Trail National Scenic Byway.

- blackbirdsaloon.com
- 28 Main St., Los Cerrillos

BLUE HERON RESTAURANT

Taste flavorful cuisine spotlighting locally grown ingredients at this renowned spa restaurant. Try a fresh salad or green chile cheeseburger.

- ojosparesorts.com/ojo-santa-fe/restaurant/
- 242 Los Pinos Rd., at Ojo Santa Fe Spa Resort

CAFE FINA

A favorite with locals and travelers, this bright, bustling eatery serves breakfast and lunch. Don't miss the fluffy ricotta pancakes or chicken enchiladas, and anything from the bakery is divine.

- cafefinasantafe.com
- 624 Old Las Vegas Hwy.

CHAI YO

Potstickers, Pad Thai, Yellow and Red Curry and other authentic Thai specialties. Many vegetarian options.

- chai-yoeldo.com
- La Tienda Shopping Center, 7 Caliente Rd., Ste 10, Bldg A, Eldorado

THE DELI BARN

Made from scratch sandwiches like the Beef Goes On—stacked with slow-roasted Black Angus beef, cheddar, red onion, and horseradish—are showstoppers at The Deli Barn in Eldorado. Pair one with a side of green chile potato salad or a homemade soup and dessert, and you've got a gourmet lunch to go, or to savor in the bright, spacious eatery.

- thedeli-barn.com
- 7 Avenida Vista Grande D7, at The Agora Shopping Center, Eldorado

ELDORADO COFFEE CORRAL

In search of New York Bagels on this side of the Rio Grande? Head to this local, family-owned coffee shop, which also serves great coffee, pastries and donuts and is located in the La Tienda Shopping area.

- eldoradocoffee-corral.com
- 7 Ave. Vista Grande #D6, Eldorado

EL PARASOL

Since 1958, this family-owned restaurant, now with six locations, has served the tasty, traditional foods of northern New Mexico and Mexico, including tacos, tamales and burritos.

- elparasol.com/santa-fe-south
- 298 Dinosaur Trail

FABLE RESTAURANT & MARKET

Their made-from-scratch, seasonal menu brings fresh flavors to every plate in a casual setting. Sit down service as well as many takeout options. Fable serves handcrafted cocktails, regional draft beers and natural wines. The Market features New Mexican goods and every day kitchen staples from local and regional artisans.

- fablesantafe.com
- 7 Avenida Vista Grande Unit 6B, at The Agora Shopping Center, Eldorado

FUSION TACOS

At Fusion Tacos, you'll find a delightful mix of authentic Mexican cuisine that perfectly blends fast and healthy options, making it a standout choice for the best Mexican dishes in New Mexico.

- fusiontacosnm.com
- At Santa Fe Brewing: 35 Fire Place
- Eldorado: La Tienda Shopping Center, 7 Caliente Rd.

HARRY'S ROADHOUSE

Harry's is famous for fantastic food and a fun atmosphere. Try the carne asada tacos or the daily specials. Don't miss the amazing desserts.

- harrysroadhousesf.com
- 96 B Old Las Vegas Hwy.

HELLO SWEET CREAM

Tucked away in Eldorado, Hello Sweet Cream scoops small-batch, artisanal ice cream that's out of this world. Seasonal and local ingredients produce inventive flavors such as toasted almond and dark cherry; basil berry cheesecake crumble; and classics like the fudgy blue ribbon chocolate. Try it on a cone, or in a grab-and-go pint, and get ready to swoon.

- hellosweetcream.com
- 7 Caliente Rd B2, La Tienda



Harry's Roadhouse

JAMBO BOBCAT BITE

Jambo Bobcat Bite by Chef Ahmed Obo offers American classics like eggs benedict, French toast, burgers, and fish & chips, all with a unique Jambo twist and a touch of New Mexican flavor.

- jambobobcatbite.com
- 418 Old Las Vegas Highway

JAVA JUNCTION

Coffee reigns supreme at this cafe in Madrid, made with locally roasted beans. Pair espresso, latte or other beverages with a slice of homemade pie.

- java-junction.com
- 2855 NM 14, Madrid

JEZEBEL SODA FOUNTAIN

Madrid's original 1920s soda fountain is a blast from the past, serving milkshakes and ice cream cones, along with sandwiches and curly fries.

- jezebelgallery.com/pages/soda-fountain
- 2860 NM 14, Madrid

SOUTHERN SANTA FE COUNTY (continued)

LEGAL TENDER SALOON & EATING HOUSE

The chatter of happy diners fills the dining rooms and elegant saloon in this historic 19th century landmark. Try the green chile stew and pan-fried Ruby trout.

- legaltenderlamy.com
- 151 Old Lamy Trail, Lamy

REFINERY 14

Located in the heart of Madrid, Refinery 14 dishes out breakfast and lunch with a local, farm-fresh twist. Swing by for a tasty sandwich and unwind on their patio or in the dining room.

- refinery14.com
- 2849 NM 14, Madrid

SAN MARCOS CAFE

Gloriously gooey cinnamon rolls keep locals and visitors coming back to this beloved home-style eatery, which serves breakfast anytime, along with burgers, burritos and other filling fare.

- turquoisetrail.org/stops/detail/san-marcos-cafe
- 3877 NM 14, Lone Butte

SHUGARMAN'S LITTLE CHOCOLATE SHOP

With exotic sweets like milk chocolate green chile caramel turtles with pecans to red chile mangoes dipped in chocolate, this little chocolate shop in Madrid is beloved for its big flavors.

- shugarmanschocolate.com
- 2842 NM 14, Madrid

TASTE OF MAGGIE'S COCINA

Pierogis, Beet Soup and Stuffed Cabbage, Carne Adovada and a Cuban Sandwich with a variety of other dishes are offered at this eclectic food truck that brings global street food flavors. Serves breakfast and brunch and operates seasonally.

- order.toasttab.com/online/taste-of-maggies-cocina
- 7 Caliente Rd., Eldorado

THE BOURBON GRILL

Grilled steaks and seafood are the specialty. Try deep-fried panko-crusting avocados with lime crema then a surf and turf combo of lobster tail and New York steak.

- bourbongrillsantafe.com
- 104 Old Las Vegas Hwy., at El Gancho

THE MINE SHAFT TAVERN

A hub in Madrid's mining heyday, this historic tavern boasts New Mexico's longest stand-up bar. Enjoy live music and roadhouse favorites like green chile cheeseburgers and margaritas. Located on the Historic Turquoise Trail National Scenic Byway.

- themineshafttavern.com
- 2846 NM 14, Madrid

THE PANTRY DOS

The sister restaurant to The Pantry, "Santa Fe's meeting and eating place since 1948," creatively combines New Mexican and American cuisine. Try the stuffed sopapilla or the Reuben sandwich.

- thepantrydos.com
- 20 White Feather

UPPER CRUST PIZZA

This popular pizza destination is known for creative combos like the New Mex, topped with red chile and chorizo, and the Combo, pairing pepperoni and green chile.

- uppercrustpizza.com
- 5 Colina Dr., Eldorado
- 329 Old Santa Fe Trail at El Gancho



HOPS & SPIRITS

Raise a glass to New Mexico's liquid gold. From craft beers to locally distilled spirits, it's all crafted right here in the Land of Enchantment. With over 75 award-winning breweries and distilleries, we proudly hold the title of "The Frontier of Beer" from the New Mexico Brewers Guild. Some even grow their own hops, providing a genuine farm-to-table experience — where every sip has a story to tell.

Drink responsibly and choose a designated driver.





HOPS & SPIRITS

**BEER CREEK
BREWING COMPANY**

Live music, fine beer and great pizza bring crowds to this boisterous brewpub on the Turquoise Trail in the San Marcos Lone Butte area. Try the Bonanza meat-based pizza with green chile.

- beercreekbrew.com
- 3810 NM 14

**NUCKOLLS
BREWING CO.**

This outpost of Nuckolls Brewing Co. sits inside a working depot in the historic railroad town of Lamy, offering craft beer and live music. Hours fluctuate based on season; check the website to confirm.

- nuckollsbrewing.com
- 152 Old Lamy Trail
- 1611 Alcala St.

**SANTA FE BREWING
COMPANY (Company HQ)**

Enjoy award-winning beer produced by New Mexico's oldest craft brewer at Santa Fe Brewing Co.'s headquarters, with live music at The Bridge. Pair it with tasty bites from Fusion Tacos, known for their mix of fast, healthy Mexican cuisine.

- santafebrewing.com/
taproom/beer-hall/
• 35 Fire Place

**SANTA FE BREWING
COMPANY (Eldorado
Taphouse)**

For a pub-style experience, visit Santa Fe Brewing Co.'s Eldorado Taphouse, a neighborhood hang-out with a number of drink choices and seasonal live music outdoors.

- santafebrewing.com/
taproom/el-dorado-
taphouse
• 7 Caliente Rd.

THE BRAKEROOM

In downtown Santa Fe, The Brakeroom features 18 tap handles, cider, wine, and nightly food trucks. Housed in a historic cabin once used by railroad brakemen, come experience their story firsthand.

- santafebrewing.com/
taproom/the-brakeroom
• 510 Galisteo St.

**TUMBLERROOT
BREWERY AND
DISTILLERY**

One venue houses the production facility with an intimate British pub-style tasting room and the other offers a large live music venue, tasting room, food truck and expansive patio.

- tumblerootbrewery
anddistillery.com
• Alegría on Agua Fria
Taproom +
Music Venue
2791 Agua Fria St.
• Pottery Pub
135 W Palace Ave.
• Tasting Room at
Rancho Viejo
32 Bisbee Court

Farmers Markets

Bright red and green chile, fresh flowers, and juicy tomatoes highlight Santa Fe County's rich soil. Visit farmers markets at the Railyard, Southside, Poeh Cultural Center, and roadside stands along the way.



ELDORADO FARMERS MARKET

This small, seasonal market offers a big selection of tomatoes, corn, greens and other fare, along with baked goods, arts, crafts and other enticing items. *Friday Afternoons*

- farmersmarketsnm.org/marketfinder-markets/eldorado-farmers-market
- La Tienda at Eldorado

CERRILLOS STATION FARMERS MARKET

Local farm-fresh products and artisanal goods in the historic village of Los Cerrillos. *Thursday Afternoons*

- Instagram: @cerrillosstationfarmersmarket
- 15B, 1st St., Cerrillos

POJOAQUE FARMERS MARKET

Find fava beans and sugar snap peas, peaches and chokecherries and other fare grown in the fertile Pojoaque Valley and northern New Mexico at this summer market. *Wednesdays*

- poehcenter.org/markets/pojoaque-farmers-market
- 78 Cities of Gold Rd.

SANTA FE FARMERS' MARKET

Hailed by *Sunset Magazine* as one of the country's "Top Ten Farmers' Markets," this year-round feast of flavors features 150 farmers and producers from northern New Mexico. *Tuesdays & Saturdays*

- santafefarmersmarket.com
- 1607 Paseo de Peralta, Suite A

REUNITY RESOURCES FARM STAND + SOIL YARD

Visit Reunity Resources for fresh produce and hands-on farming volunteer opportunities. This nonprofit hosts concerts with local artists, features a food truck, and offers a Summer Dinner Series with farm-to-table meals served 'supper club style'.

- reunityresources.com
- 1829 San Ysidro Crossing



Santa Fe Farmers' Market



Hilton Santa Fe Buffalo Thunder Resort & Casino

Deal Yourself In

Feeling lucky? Santa Fe County deals out three distinct gaming destinations, all set against the stunning backdrop of the Sangre de Cristo Mountains. From lively casinos and live entertainment to resort escapes, championship golf, dining, and nights beneath starry New Mexico skies, each delivers its own kind of Northern New Mexico escape.



CITIES OF GOLD CASINO

Cities of Gold Casino offers a lively stop just north of Santa Fe with exciting gaming, casual dining, live entertainment, and easy access to Pueblo culture, art, and scenic New Mexico adventures.

- citiesofgold.com
- 10 Cities of Gold Rd., Pojoaque

TESUQUE CASINO

Tesuque Casino delivers intimate gaming excitement just minutes from Santa Fe with slots, table games, welcoming dining, and beautiful high-desert surroundings. It's an easy stop for travelers seeking local flavor, fun, in a relaxed Northern New Mexico atmosphere.

- tesuquecasino.com
- 7 Tesuque Rd.

HILTON SANTA FE BUFFALO THUNDER

Buffalo Thunder Casino blends Northern New Mexico adventure with upscale resort energy featuring gaming, championship golf, spa escapes, live entertainment, and sweeping high-desert views near Santa Fe for an unforgettable getaway filled with culture and excitement year-round thrills await visitors.

- hiltonbuffalothunder.com
- 20 Buffalo Thunder Trail



INTO THE WILD...

If you're seeking a new adventure, Santa Fe County has plenty to offer. You can explore the rugged mountains, cast a fly-fishing line, saddle up for a horseback ride, ski through fresh powder, hike scenic trails, or simply relax by the river.

It is impossible to not become enchanted with this land. It's evergreen piñon forests, blooms of sage and pops of colorful Indian paintbrush flowers, the aspen groves that turn gold in the fall, and the trails that wander through it all are a big part of why so many people visit Santa Fe County. Here, the elevated terrain feels like a big breath of fresh air, providing an escape from your inbox and to-do lists. There is a hike for every outdoorsman, a trail for every preference, an adventure for every seeker.



SKIING

With legendary powder and staggering views, Ski Santa Fe is one of the top ski destinations in the Southwest. It's the hottest place to be in the cold of winter.

• skisantafe.com





Dale Ball Trails, Picacho Peak

HIKING

From the high-mountain beauty of the Pecos Wilderness to the ponderosa-filled Santa Fe National Forest, our hiker's paradise has more than 600 magnificent miles to explore. Prepare to be awestruck.

Hiking Trails:

- santafe.org/blog/post/hiking-trails/

BIKING

Flow trails, cross-country loops, long ascents, and more than 400 miles of trails are just a few reasons why USA Today named Santa Fe one of America's top mountain biking towns—and why it's earned International Mountain Biking Association's (IMBA) Trail Town status. Did we mention the jaw-dropping views?

Mountain Bike Trails:

- mtbproject.com

CLIMBING

Welcome to rock-climbing country, where elevated adventures include 300-foot-high basalt cliffs in Diablo Canyon Recreation Area and the majestic granite crag in Pecos River Canyon.

Climbing Routes:

- mountainproject.com

Adventures:

- climbsantafe.com

RAFTING

From the winding waters of the Rio Grande to the rushing rapids of the Rio Chama, the northern Rio Grande Valley offers unforgettable days on the river. Prepare to get soaked—in the best way.

- santaferafting.com



Cerrillos Hills State Park

GOLFING

Tee off on some of the country's top-ranked golf courses. Playing at high altitude, surrounded by northern New Mexico's stunning scenery, just may elevate your game.

Golf Courses:

- golfcochiti.com
- hiltonbuffalothunder.com
- linksdesantafe.com
- santaclaran.com/black-mesa-golf-club

FISHING

Grab your rod and reel, Santa Fe County's high-desert waters hold surprising rewards—from the cold, trout-filled stretches of the Pecos River to Nambé Falls & Lake Recreation Area, where trout lurk beneath wide New Mexico skies.

• auberge.com/bishops-lodge/

• blm.gov/visit/santa-cruz-lake-recreation-area

• nambepueblo.org/nambe-falls-lake/

• nps.gov/peco/planyourvisit/fishing.htm

HORSEBACK RIDING & EQUINE EXPERIENCES

Saddle up for an adventurous outing in horse country on a private ride, a custom group tour or a sunset excursion beneath an endless sky awash in brilliant colors.

Guided Adventures:

- aubergeresorts.com/bishopslodge/experiences/trailriding
- equusinspired.com
- foursixessantafe.com
- santafewest.com
- turquoisehillstriding.com

GUIDED EXCURSIONS

From high-mountain hikes and ancient Puebloan ruins to rugged jeep tours and sunset train rides with live entertainment, cocktails, and food – the sky's the limit for your next adventure.

- skyrailway.com
- santafeballoons.com

Tours:

- santafejeeptours.com
- santafemountainadventures.com
- southwestsafaris.com

Rio Grande River with Santa Fe Rafting Company



Sky Railway



**“When we listen to the land,
we listen to our own hearts.”**

– Leslie Marmon Silko





Be Still My Beating Heart

Santa Fe has a storied history as a healing destination, where its dry climate and abundant sunshine have traditionally been recommended for wellness. Experience ultimate relaxation in Santa Fe's premier spas, where you can indulge in rejuvenating massages, facials, and unique local therapies. Enjoy serene mineral hot springs and private outdoor soaking pools.

Local spas here offer a myriad of relaxing experiences. Ojo Santa Fe Spa Resort is a tranquil oasis that offers a sanctuary for rejuvenation and relaxation, with its natural waters, luxurious accommodations, and holistic wellness offerings

surrounded by majestic mountains and expansive vistas. Ten Thousand Waves transports visitors to the mountains of Japan with traditional bathhouse style tubs and a vast menu of services. The on-site restaurant, Izanami, serves Japanese tapas (Izakaya) and a world class selection of sake. Santa Fe County is rich with natural hot springs perched along mountain paths and rivers. The Zen ambiance of a spa is attainable here, at spas themselves and in outdoor experiences.



**OJO SANTA FE
SPA RESORT**

An oasis of spring-fed thermal pools, enticing massage, and other body treatments, make this spa resort a delightful destination. Yoga and other activities round out the revitalizing allure.

- ojosparesorts.com/ojo-santa-fe
- 242 Los Pinos Rd.



TEN THOUSAND WAVES SPA

Escape to the mountains for a blissful outdoor hot tub soak, followed by a Japanese Shiatsu massage. This serene spa resort is inspired by Japan's renowned tradition of mountain hot spring resorts.

- tenthousandwaves.com
- 21 Ten Thousand Waves Way



**THE SPA AT FOUR
SEASONS RESORT
RANCHO ENCANTADO
SANTA FE**

Unwind with a nourishing jasmine honeysuckle massage and facial at this restorative spa sanctuary, which fuses modern techniques with regionally-inspired body work and ingredients.

- fourseasons.com/santafe/spa
- 198 NM 592



**STREAM DANCE SPA
AT BISHOP'S LODGE,
AUBERGE RESORTS
COLLECTION-SANTA FE**

Resort guests can elevate wellness with nature-inspired treatments rooted in ancient ritual. From a botanical-infused massage to a vibrational sound healing, these spa experiences can invoke serenity.

- aubergeresorts.com/bishopslodge/wellness/spa
- 1297 Bishops Lodge Rd.

THE TRUE OLD WEST

Santa Fe County is so much more than its capital city namesake. There are also romantic hamlets with pastoral ways of life that are slow and cherished. Some of these villages have deep traditions that tie their communities together in ways that cannot be replicated.

In essence, Santa Fe County is special because of its people, landmarks, and cultural treasures. There is no Santa Fe without its community, its diverse languages, its distinctive adobe architecture, or its iconic chile rstras.



Cerrillos

AGUA FRIA

Originally a resting stop on the famed Camino Real, the historic Agua Fria Village, is one of Santa Fe County's oldest communities, where adobe homes and the historic San Isidro Church anchor one of North America's oldest agricultural settlements. The nearby Santa Fe River drifts peacefully through the landscape just minutes from the city.

CERRILLOS

A boomtown during the 1880s, Cerrillos—Spanish for "the small hills"—lies in the country's oldest designated mining district, prized for turquoise, silver and gold. Part of the Turquoise Trail National Scenic Byway, the historic town, with its authentic Old West main street, has long attracted the movie industry. The Cerrillos Hills State Park draws hikers to scenic trails that wind through volcanic-shaped hills, with abundant birds and wildlife.

CHIMAYÓ

Founded by 17th-century Spanish settlers, Chimayó means "superior red flaking stone" in the Tewa language. Located on the High Road to Taos in the foothills of the Sangre de Cristos, the village is renowned for growing its flavorful red chile, served at the James Beard award-winning restaurant, Rancho de Chimayó.

El Santuario de Chimayó, the Spanish Colonial church, is famous for its "holy dirt," believed to hold healing powers.

EDGEWOOD

Pioneer families settled Edgewood at the turn of the 20th century, and many of their descendants still call the town home today. Located just minutes from historic Route 66, Edgewood celebrates its heritage each July with Cowboy Days, featuring chuckwagon BBQ shows at Wildlife West Nature Park, a beloved rescue zoo and entertainment venue.



El Potrero Trading Post, Chimayó

ELDORADO

This friendly arts community offers dining and shopping along with wide open skies, mountain views and walking trails. It is also home to the annual Eldorado Studio Tour, the largest in the region.

GALISTEO

Part of a Spanish land grant in the 1600s and a vital stop along the Camino Real trade route, Galisteo is a peaceful village, with old cottonwoods lining the Galisteo River and the historic mission church, Iglesia Nuestra Señora de los Remedios, standing like a sentry. The nearby Galisteo Basin Preserve, a place of stunning, serene beauty, has popular trails for hiking and biking.

GLORIETA

The Civil War's westernmost battle was fought here in 1852, when Union forces defeated Confederate troops at the Battle of Glorieta Pass. Glorieta is the gateway to magnificent hiking in the Pecos Wilderness.

LA CIENEGA

La Cienega's Spanish name means "spring and its marsh" and its waters have long fed the area, including the serene natural-fed springs of Ojo Santa Fe Spa Resort, and El Rancho de Las Golondrinas living history museum, where the Leonora Curtin Wetland Preserve provides an oasis for migratory birds and wildlife. Nearby, ancient rock art images fill La Cieneguilla Petroglyph Site.

LAMY

Once a bustling railroad town, this small village in the Galisteo Basin was named after Archbishop Jean-Baptiste Lamy, the first archbishop of Santa Fe. Lamy is home to a historic restaurant and saloon, and a tap room inside the Lamy Train Station, built for the Atchison, Topeka and Santa Fe Railway in 1909. This Mission Revival style train depot serves Amtrak's Southwest Chief and the immersive scenic train, Sky Railway.

MADRID

Gold fever struck Madrid in the mid-1800s, followed by a coal mining boom, which faded in the 1950s, leaving Madrid a ghost town. Located on the historic Turquoise Trail National Scenic Byway, Madrid today bustles with boutiques, galleries, antique shops, and the historic Mine Shaft Tavern. First-time visitors should note that the pronunciation of this town is just as unique as the town itself – MAD-rid.

NAMBÉ

In the Tewa language, Nambé means "people of the round earth," and the area remains closely tied to the land. Located along the High Road to Taos, it's home to Nambé Pueblo and the Nambé Falls and Lake Recreation Area, where a striking double-drop waterfall draws visitors year-round. Fishing, camping, kayaking, and picnicking are all part of the experience. This is also the birthplace of Nambé, a design company renowned for its sculptural metal designs.

POJOAQUE

Pojoaque, or "Po-suwae-geh Owingeh" in Tewa, means "water gathering place." The area's small communities bring great diversity, from Cuyamungue and Jacona to El Rancho and the Pueblo of Pojoaque. At the Poeh Cultural Center and Museum, the featured exhibit Di Wae Powa—presented in partnership with the Smithsonian's National Museum of the American Indian—celebrates the return of 100 Tewa pots to be reunited with their creators' descendants.

TESUQUE

With towering cottonwoods, lush orchards, and peaceful pastures, Tesuque, named after nearby Tesuque Pueblo, rests in the foothills of the Sangre de Cristo Mountains. Its Tewa name means "village of the narrow place of the cottonwood trees." With the Tesuque River, Camel Rock—the unique formation resembling a camel—and sweeping views of both the Sangre de Cristos and the Jemez Mountains, the area is beloved for hiking and quiet moments in nature. Nearby, the historic Tesuque Village is home to several popular restaurants and gathering spots that add to the area's charm.

Adventure in a Whole New Light

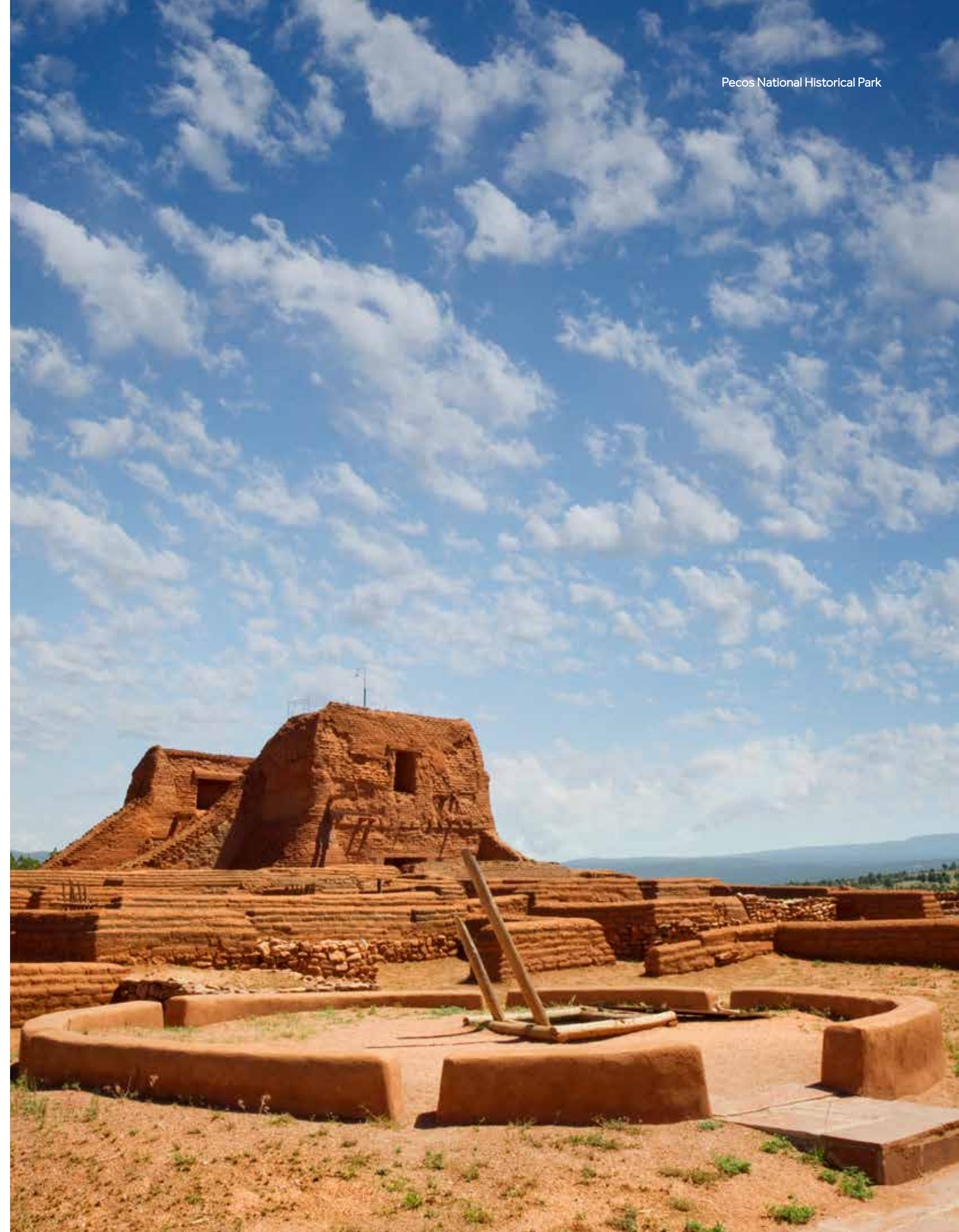
Santa Fe County's enchanting charm is amplified by its outdoor spaces. With abundant natural beauty, and important histories, these spots offer tours from knowledgeable staff, making them ideal for travelers who like to dig into the full depth of a place.

Birdwatchers love Leonora Curtain Wetland Preserve, which draws a variety of avian friends to its lush property and spring-fed pond. The red-toned adobe structures at the Pecos National Historical Park stand out against azure skies, and a ceremonial kiva welcomes visitors to get a sense of the spaces that Indigenous people hold sacred.

The verdant meadows at the Valles Caldera sit in the basin of a volcano that erupted over 1.25 million years ago. Today, those pastures are home to various wildlife from Gunnison's prairie dogs to elk.

Bandelier National Monument is a must-visit destination for anyone delving into the wonders of this region. Visitors can explore an expansive network of trails winding through rugged canyons and forests, while taking in breathtaking landscapes, and even exploring cliff dwellings and petroglyphs. Pueblo history, archaeology, and natural beauty make the monument unforgettable.

Each location has a character and story completely its own. Many of these sites hold some of the county's most beautiful trails, making them great spots for a hike and a picnic lunch.



BANDELIER NATIONAL MONUMENT

Discover 33,000 acres of stunning canyons and mesas, home to ancient petroglyphs, cave dwellings, and rich cultural history.

- nps.gov/band/index.htm

CERRILLOS HILLS STATE PARK

Located off the historic Turquoise Trail National Scenic Byway, this park boasts beautiful trails for horseback riding and hiking. Visit for a Star Party and be transported to another world.

- cerrilloshills.org
- 37 Main St.

HYDE MEMORIAL STATE PARK

Connect with nature and the ponderosa pines. With over four miles of hiking trails, wildlife viewing and camping, this state park is a family adventure waiting to begin.

- emnrd.nm.gov/spd/find-a-park/hyde-memorial-state-park
- 740 Hyde Park Rd.

LA CIENEGUILLA PETROGLYPH SITE

Hundreds of ancestral petroglyphs cover the rocks at this site. Some date back to the 13th and 17th centuries.

- blm.gov/visit/la-cieneguilla-petroglyphs
- 662-674 Paseo Real

NAMBÉ FALLS & LAKE RECREATION AREA

Home of the stunning double drop waterfalls, the recreation area is the prime spot for fishing, camping and family fun.

- nambepueblo.org/nambe-falls-lake
- 544 Poechunu Poe

NEW MEXICO WILDLIFE CENTER

From barn owls to Swainson's hawks, the Wildlife Center is home to birds, reptiles and even bobcats. Opened in 1986, the Center is dedicated to conservation and wildlife education.

- newmexicowildlife-center.org
- 19 Wheat St.

PECOS NATIONAL HISTORICAL PARK

Step into history exploring pueblo ruins or walking the 2.35 mile Glorieta Battlefield trail. Take in the cultural and geographic wonders of the area. Open year round. Free to the public.

- nps.gov/peco
- 1 Peach Dr.

RANDALL DAVEY AUDUBON CENTER & SANCTUARY

Encompassing 135 acres of exquisite landscapes and wildlife, this sanctuary is a peaceful home for plants and animals. Stop by the nature store and start your adventure.

- randalldavey.audubon.org
- 1800 Upper Canyon Rd.

SANTA CRUZ LAKE RECREATION AREA

Just 30 miles north of Santa Fe, this snow-fed lake sits at the base of the Sangre de Cristo Mountains—a peaceful retreat for fishing, paddleboarding, kayaking, and camping.

- blm.gov/visit/santa-cruz-lake-recreation-area
- Santa Cruz Lake Rd.

TSANKAWI AT BANDELIER NATIONAL MONUMENT

Explore the ancestral home of the Tewa people who settled here in 1200 AD. Hike the ancient pathway worn into rock by the people who once lived here. Located 12 miles northeast of the main entrance on Highway 4.

- nps.gov/band/planyourvisit/tsankawi.htm

VALLES CALDERA NATIONAL PRESERVE

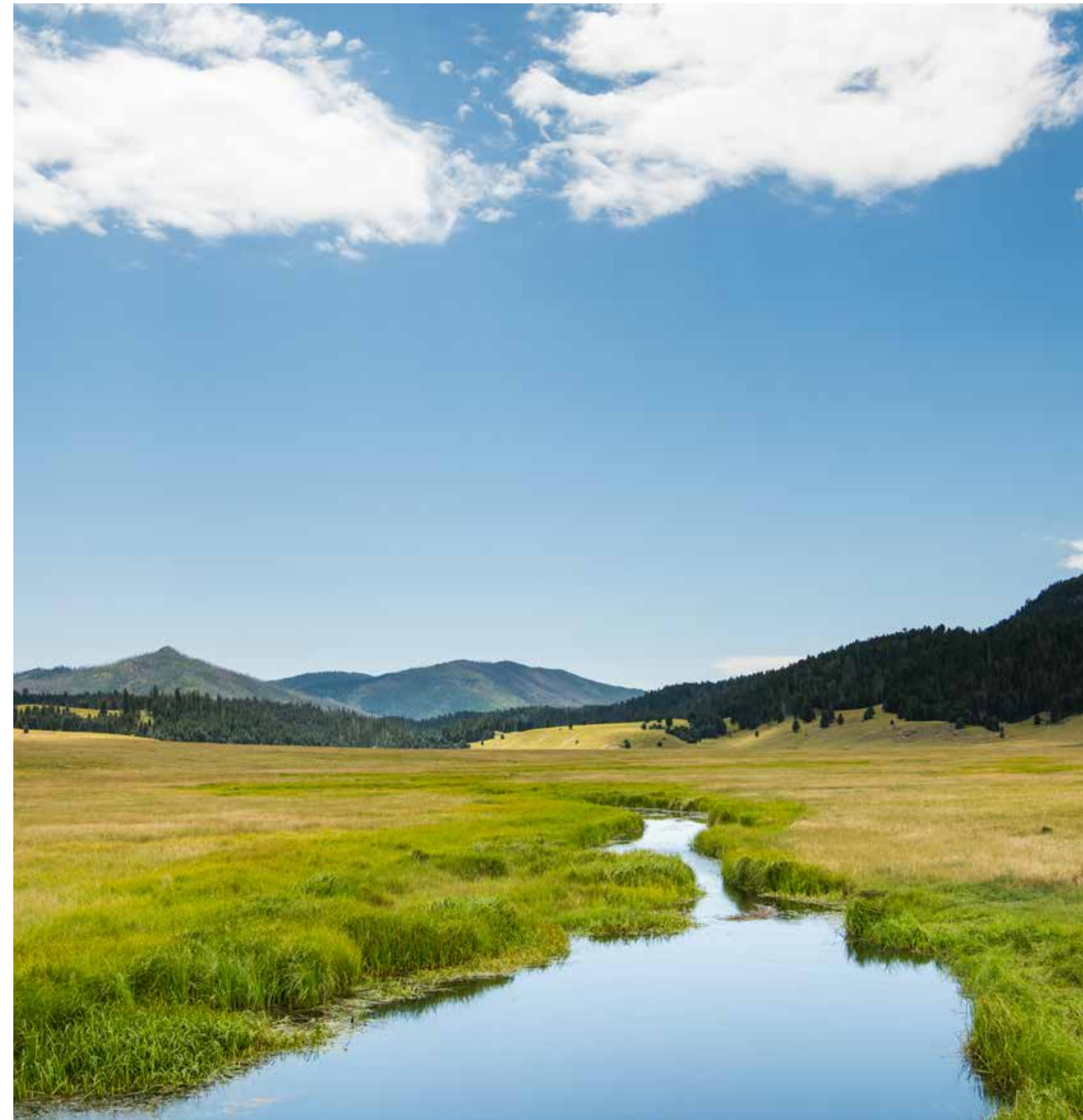
This stunning preserve which was formed after a volcanic eruption over 1 million years ago can be experienced through hiking, biking, fishing and more. Bring a camera, there's sure to be a wildlife spotting.

- nps.gov/vall
- 39201 NM 4, Jemez Springs

WILDLIFE WEST NATURE PARK

This 122-acre wildlife refuge showcases native New Mexican plants and animals. During the summer, visitors can experience live music and family-friendly events.

- wildlifewest.org
- 87 N. Frontage Rd. Edgewood



Valles Caldera National Preserve

LET'S GO...

Navigate red-rock canyons, expansive mesas, and wide-open skies. Explore Santa Fe County's adobe charm and vibrant art scene. Enjoy Southwest flavors at local cafes and uncover hidden gems like ancient ruins and hot springs. Whether you're drawn to art, history, or scenery, Santa Fe County promises a road trip full of discovery.



Historic Turquoise Trail National Scenic Byway





Route 66 Centennial

Since 1926, U.S. Route 66 has stretched nearly 2,500 miles from Chicago to Santa Monica, shaping America's love of the open road. In New Mexico, more than 400 miles of highway sparked neon motels, roadside diners, and a new era of automobile travel.

Santa Fe County holds a distinctive place in that story. When Route 66 first opened, the road didn't bypass Santa Fe — it climbed toward it. The original alignment curved north from Santa Rosa into the state capital, following Old Pecos Trail to the historic Santa Fe Plaza. For about a decade, travelers arrived directly in the heart of the city, discovering Native American and Hispanic traditions, adobe architecture, art, and a food scene unlike anywhere else along the route.

By 1938, a more direct east-west corridor shifted the main line through Albuquerque, and Santa Fe was no longer on the official alignment. But Santa Fe was never just a stop — it was a detour with depth. That early chapter still echoes today: pull up a stool at Plaza Cafe for a green chile burger and



High Road to Taos Scenic Byway

milkshake, step inside La Fonda on the Plaza, or browse vintage signs and Southwest keepsakes at the Five & Dime General Store. Along the original alignment, classic motor courts like El Rey Court and The Mystic Santa Fe preserve the mid-century roadside spirit, while beyond the city Pecos National Historical Park reminds visitors that travelers have crossed this landscape for centuries — first by wagon, rail, then by automobile.

As the centennial approaches, Santa Fe County celebrates its role not as the longest stretch of Route 66, but as one of its most distinctive — where the road once bent toward culture, creativity, and something deeper than distance.



**“LAND
REALLY
IS THE
BEST ART.”**

— Andy Warhol



World-Class Events



SPRING

SWAIA NATIVE FASHION

The first ever of its kind, this event features the finest creations of Native and Indigenous designers.

• Early May

TURQUOISE TRAIL PACK BURRO RACE

Located in scenic Cerrillos, this unique race has participants either bring or rent an adorable pack burro while venturing through this historic mining town.

• Early May

SANTA FE CENTURY

This cycling event which highlights the landscape of northern New Mexico starts and finishes in downtown Santa Fe. Riders will pass through the Ortiz Mountains and the Galisteo basin. Choose from 100, 50 and 25-mile routes or an all-dirt route for mountain bikers.

• Mid-May

SANTA FE INTERNATIONAL LITERARY FESTIVAL

This three-day event celebrates our shared love of language and ideas—bringing together influential authors, thinkers, and passionate readers for an event shaped by curiosity, conversation, and a shared love of literature.

• Mid-May

SUMMER

CURRENTS NEW MEDIA FESTIVAL

New media fans from near and far turn out for this innovative festival, which showcases installations, multimedia performances, robotics, virtual and augmented reality, and other cutting-edge art forms.

• Mid-June

RODEO DE SANTA FE

This renowned, family-friendly rodeo draws nearly 500 contestants each year including World Champion cowboys and cowgirls.

• Late June

THE SANTA FE OPERA

Set atop a mesa with glorious views, this acclaimed summer opera festival, founded in 1957, presents world-class operas, including world premieres, each as stunning as the opera theater's dramatic setting. Off-season, this is a venue for concerts with such musicians as Lila Downs, Robert Plant & Alison Krauss, and Gary Clark Jr.

• July- August

SANTA FE WINE FESTIVAL

Celebrate the wines of New Mexico, the country's first wine-making region, at the state's longest-running wine festival. Meet the winemakers, sample their wines and enjoy live music and dancing.

• Early July

INTERNATIONAL FOLK ART MARKET

Where else can you meet more than 150 artists from some 50 countries, listen to live music and savor global foods? Browse an amazing array of unique folk art for treasures to take home.

• Mid-July, Santa Fe Railyard

TRADITIONAL SPANISH MARKET

This premiere event showcases the region's Spanish Colonial history, with carved wooden saints, tinwork, hand-carved furniture and other traditional Spanish arts and crafts made by hundreds of Hispanic artists. Contemporary Hispanic Market takes place simultaneously.

• Summer Market: Late July, Santa Fe Plaza

SANTA FE COUNTY FAIR

Featuring various livestock shows from horses to goats, rabbits to lamb, as well as art exhibits, food and more.

• Early August

SANTA FE INDIAN MARKET

(Southwestern Association for Indian Arts)

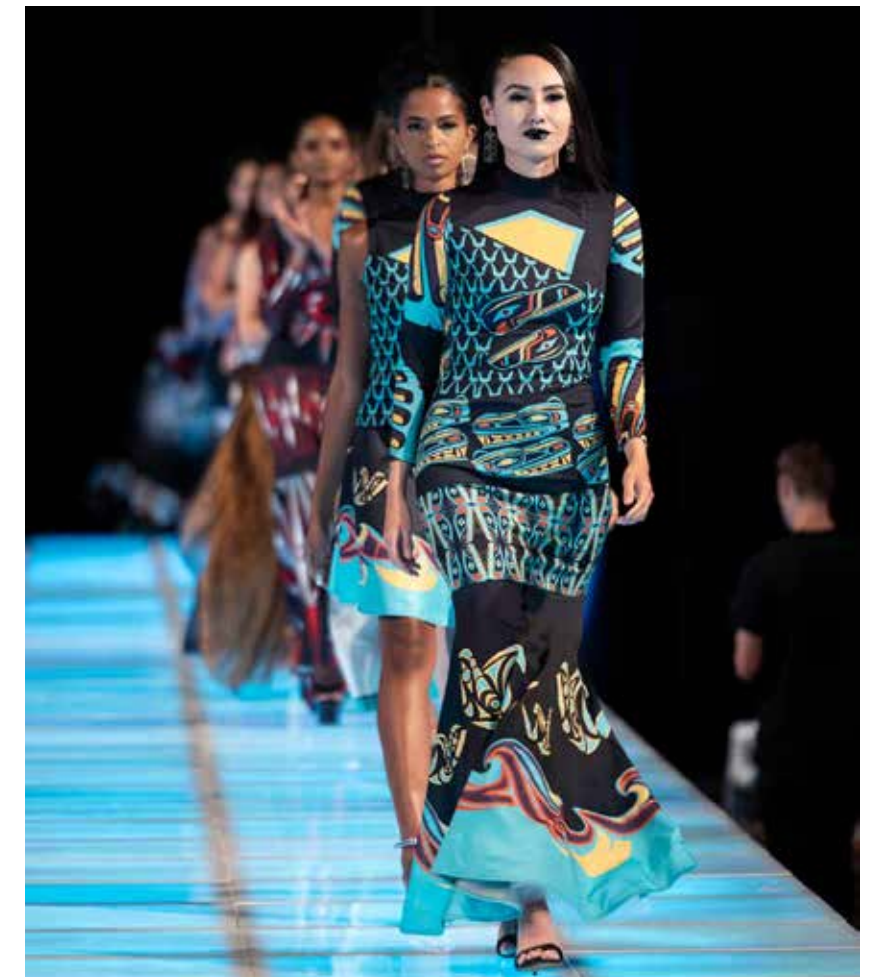
The world's largest Native American art market is Santa Fe's biggest event of the year. More than 1,000 artists sell their traditional art. Dances, music, food and more are part of the vibrant scene.

• Summer Market: August, Santa Fe Plaza



Traditional Spanish Market

Photo Courtesy of Atrisco Heritage Foundation



SWAIA Native Fashion Week

Himikalas Pamela Baker, Tira Howard Photography



The Burning of Zozobra

Photo Courtesy of Kiwanis Club of Santa Fe

SUMMER (continued)

**PATHWAYS
INDIGENOUS
ARTS FESTIVAL**

Indigenous led and organized, this annual festival features creative artists from musicians, to writers to jewelers and more.

- Mid-August

**THE BURNING
OF ZOZOBRA**

For a century, this beloved tradition has brought crowds together to cheer the Burning of Zozobra, a 50-foot menacing marionette affectionally called "Old Man Gloom," amid live music, fireworks and general merriment.

- Friday of Labor Day Weekend, Fort Marcy Park

**SANTA FE
RENAISSANCE
FAIRE**

Lords and ladies, squires and knights, get thee to New Mexico's premiere Renaissance Faire for jousting, juggling, dancing, feasting, a costume contest and more.

- Mid-September, El Rancho de Las Golondrinas Living History Museum

FALL

**SANTA FE WINE
& CHILE FIESTA**

The noble grape and New Mexico chile are the toast of this long-running celebration. Wines from around the world are paired with food from the region's top chefs at wine dinners, tastings, auctions and the Grand Tasting.

- Late September, various venues in the county

**HARVEST
FESTIVAL**

Ranked by *USA Today* readers as one of the country's top harvest festivals, this family-fun weekend includes baking bread in an adobe horno, stomping grapes for wine, making tortillas by hand, and plenty of other activities.

- Early October, El Rancho de Las Golondrinas Living History Museum

**SANTA FE
INTERNATIONAL
FILM FESTIVAL**

Showcasing international and indie cinema, this world-class film extravaganza is one of *MovieMaker* Magazine's "Coolest Film Festivals on the Planet."

- Mid-October, various venues

**DÍA DE LOS
MUERTOS**
(Day of the Dead)

Inspired by Mexico's tradition of honoring loved ones who have passed, this colorful Day of the Dead celebration features music, dance, food, family activities, and a Glow-in-the-Dark Candlelight Procession.

- October 31 & November 1, Santa Fe Plaza

WINTER

**NEW YEAR'S EVE
ON THE PLAZA**

Ring in the New Year in Santa Fe style with piñon bonfires, local bands, and hot chocolate and biscochitos. At midnight, a handcrafted Zia symbol rises into the sky, accompanied by fireworks.

- Dec 31, Santa Fe Plaza

**SANTA FE WINTER
INDIAN MARKET**
(Southwestern Association for Indian Arts)

This holiday-season market brings together juried Native American artists from across the country for a showcase of traditional and contemporary works.

- Winter Market: Late November

**WINTER SPANISH
MARKET**

This annual winter market celebrates the region's Spanish Colonial heritage through santos, tinwork, hand-carved furniture, and other traditional Hispanic arts and crafts created by juried artists from across New Mexico.

- Winter Market: Early December

**NM BREWERS GUILD
WINTER BREW**

Presented by the New Mexico Brewers Guild, Winter Brew brings together 16 breweries from across the state for a celebration of New Mexico craft beer. Sip, savor, and enjoy responsibly—always choose a designated driver.

- January, Santa Fe Farmer's Market Institute



Love Elevated

One of the world's most romantic places, Santa Fe County is steeped in a unique blend of natural beauty, captivating arts and culture, beguiling architecture, and fabulous food. Add in our dazzling turquoise skies and sweeping mountain vistas and you have a celebrated wedding destination.

Whether you're planning a wedding for 20 or 200, choose from countless stunning and unique locales for saying "I do." Exchange vows in an intimate 19th-century chapel or in the striking setting of a historic ranch in the foothills of the Rockies. For rustic, old-world charm, gather with friends and family at the Historic Lodge at Hyde Memorial State Park, nestled in a pine-scented mountain forest. Find high-desert happiness at a unique glamping destination in the wilderness, where your ceremony is followed by dinner, live music and dancing beneath a sky full of glittering stars.

Couples travel here from around the world to hold their weddings in other spectacular settings, such as a one-of-a-kind themed adventure train ride through a majestic landscape. World-class resorts can cater to

every need, with a stunning indoor or outdoor setting for your ceremony and reception, an elegant dinner that reflects your tastes, and lively entertainment.

A wedding in Santa Fe County will enchant your guests, as much as it does you and your loved one. This magical destination invites you and your guests to explore acclaimed restaurants, galleries, museums, and eclectic shops. Outdoor adventures also await, including hiking, mountain biking, horseback riding, and skiing.

Rocky Mountain Bride Magazine puts it perfectly: "Santa Fe's unique blend of Native American, Spanish, and Southwestern influences ensures that your wedding will be infused with cultural richness and timeless beauty."





Bishop's Lodge, Auberge Collection

Mi Casa es su Casa

When was the last time you slept in a yurt, close to the earth like an ancient nomad? Or high in the star-filled sky at a Japanese-style mountain spa resort? In Santa Fe County, your lodging options are limitless, from a five-star resort to your own private casita. Rediscover your spirit at a wellness spa with natural healing waters, or escape the world at a countryside B&B. Kick back and relax at a campground with a view of unrivaled sunsets.



HOTELS

CITIES OF GOLD HOTEL

Just north of Santa Fe, this comfortable hotel features Sangre de Cristo Mountain views and places you steps from casino gaming, dining, and entertainment near the Poeh Cultural Center at Pojoaque Pueblo.

- citiesofgold.com/cities-of-gold-rooms
- 10 Cities of Gold Rd., Pojoaque

HOMEWOOD SUITES BY HILTON SANTA FE-NORTH

Set on the mountainside at Buffalo Thunder Resort and Casino, this all-suite hotel offers spacious accommodations, complimentary breakfast, a pool, and easy access to gaming, golf, dining, and entertainment.

- hilton.com/en/hotels/sfehwhw
- 10 Buffalo Trail

RESORTS

BISHOP'S LODGE, AUBERGE COLLECTION -SANTA FE

This iconic landmark, settled 150 years ago by Archbishop Jean Baptiste Lamy, has been revitalized as an award-winning luxury resort offering elegant Southwestern-style lodging and nature-driven adventures.

- aubergeresorts.com/bishopslodge
- 1297 Bishops Lodge Rd.

HILTON SANTA FE BUFFALO THUNDER

New Mexico's largest entertainment casino hotel in the foothills of the Sangre de Cristo Mountains, with gaming, golf, spa, indoor and outdoor pools, dining, and live entertainment.

- hilton.com/en/hotels/sfecghh
- 20 Buffalo Thunder Trail

FOUR SEASONS RESORT RANCHO ENCANTADO SANTA FE

Set against the Sangre de Cristo Mountains, this intimate, romantic resort offers luxury, serenity and adventure, with Pueblo-inspired casitas and guided adventure excursions.

- fourseasons.com/santafe
- 198 NM 592

HOUSES OF THE MOON AT TEN THOUSAND WAVES

Sleep soundly amid piñons and junipers at this Japanese-inspired spa resort. Each guest room is influenced by a Japanese ryokan, a traditional inn reflecting Japanese aesthetic and hospitality.

- tenthousandwaves.com/looding
- 21 Ten Thousand Waves Way

OJO SANTA FE SPA RESORT

Melt your worries away on your private patio or balcony, surrounded by lush gardens, thermal soaking pools, and a saltwater swimming pool. Start the day with yoga and wind down with a sunset hike.

- ojosparesorts.com/ojo-santa-fe
- 242 Los Pinos Rd.

GUEST RANCH

HACIENDA DOÑA ANDREA

Perfect for small gatherings and families, this intimate mountain estate offers seclusion and convenience along the Turquoise Trail just south of Santa Fe.

- haciendadonaandrea.com
- 78 Vista Del Oro, Los Cerrillos, NM

RANCHO JACONA

Find peace in the heart of nature at this 17th century homestead. With 12 adobe casitas outfitted in colorful Southwestern style, you can bring the whole family.

- ranchojacona.com
- 277 County Rd. 84

BED & BREAKFAST INNS

BOBCAT INN

Get away from it all at this inviting renovated hacienda, situated just minutes from downtown Santa Fe on 10 acres with spectacular views. Start the day with a famously delectable breakfast.

- bobcatinn.com
- 442 Old Las Vegas Hwy.

RANCHO DE CHIMAYÓ/ COUNTRY INN

Old world charm meets modern graciousness at this country inn, with Victorian-style guest rooms. More than a century old, the hacienda is located on the scenic High Road to Taos.

- ranchodechimayo.com/hacienda
- 297 Juan Medina Rd., Chimayó



Ojo Santa Fe Spa Resort



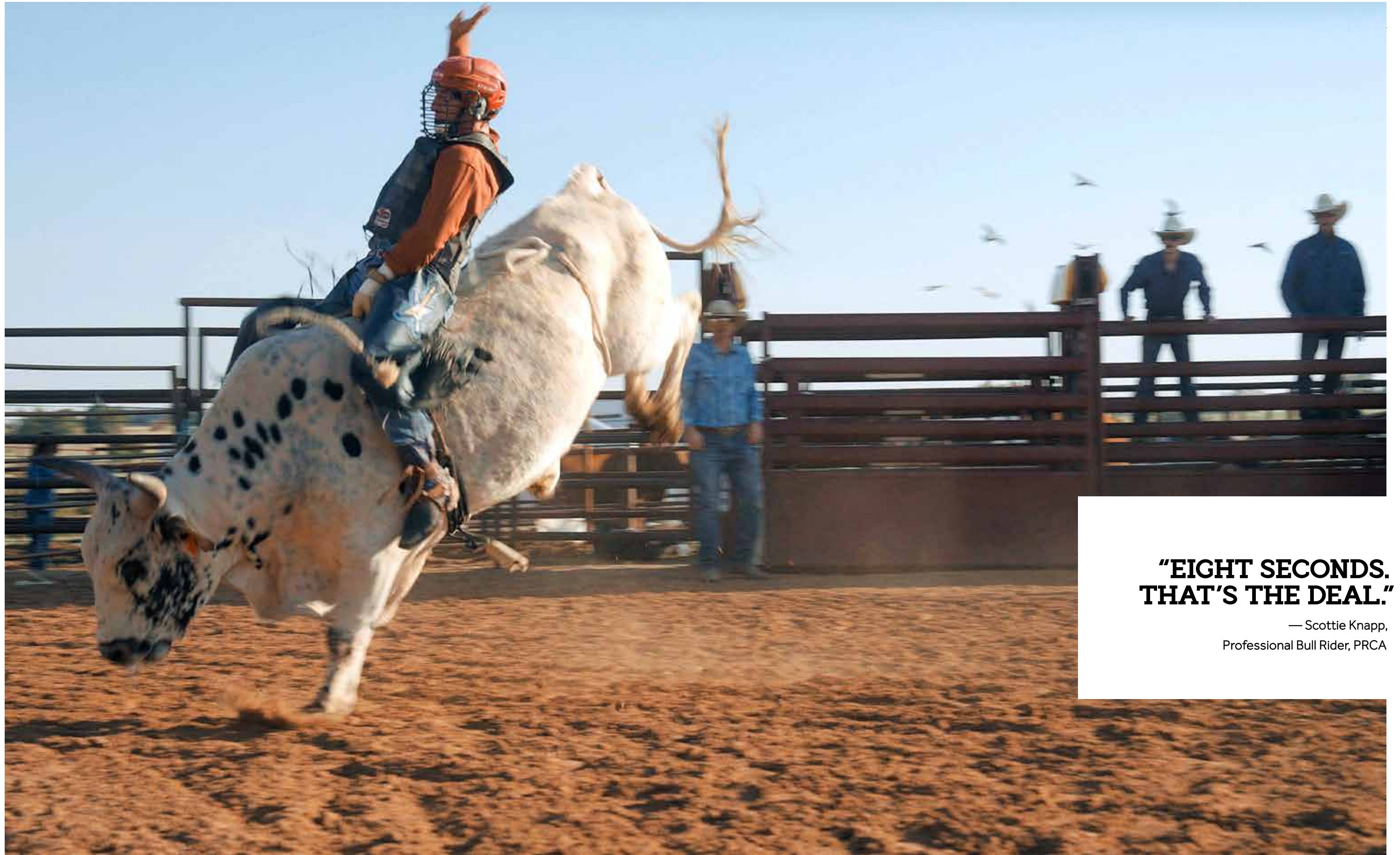
Houses of the Moon at Ten Thousand Waves



Four Seasons Resort Rancho Encantado Santa Fe

SHORT TERM RENTALS

Flexible stays. Local flavor. Authentic Santa Fe. From historic casitas to scenic mountain retreats, short-term rentals offer comfort, privacy, and a deeper sense of place. For work or play, stay Santa Fe County your way.



**"EIGHT SECONDS.
THAT'S THE DEAL."**

— Scottie Knapp,
Professional Bull Rider, PRCA

GLAMPING

KITFOX

Drink in the wondrous star-studded sky before heading to bed in a safari-style tent, on your high-desert glamping adventure in the wilds of the Galisteo Basin Preserve.

- staykitfox.com

RV PARKS/CAMPING

RANCHEROS DE SANTA FE RV RESORT & CAMPGROUND

Pitch your tent or park your RV among piñons and junipers on historic Route 66, and you'll get away from it all, even though downtown Santa Fe is minutes away.

- santaferancheros.com
- 736 Old Las Vegas Hwy.

ROAD RUNNER RV PARK

This tribally owned RV park is located 15 miles north of Santa Fe, offering full-hookup pull-through sites, Wi-Fi, and convenient access to Native American cultural attractions, dining, and recreation.

- pojoaque.org/visit/stay
- 55 Ogo Wii Rd

SANTA FE KOA HOLIDAY

Whether you're admiring hummingbirds in flight or a multi-colored sunset, you're surrounded by nature's intoxicating beauty at this campground, offering RV and tent sites.

- koa.com/campgrounds/santa-fe
- 934 Old Las Vegas Hwy.

SANTA FE NATIONAL FOREST

From developed RV sites to primitive tent sites in the lush forest, the Santa Fe National Forest has a diverse range of campgrounds.

- fs.usda.gov/r03/santafe/recreation/camping-cabins

SANTA FE SKIES RV PARK

Marvel at the panoramic views of sunsets and starry nights at this family-owned and family-friendly RV park, perched on a hilltop south of Santa Fe.

- santafeskiesrvpark.com
- 14 Browncastle Ranch

YURTS AT HYDE MEMORIAL STATE PARK

Enjoy the ultimate camping experience in a yurt, which combines the comforts of a cabin and the joys of sleeping in a mountain forest of pines.

- emnrd.nm.gov/spd/find-a-park/hyde-memorial-state-park/yurts-at-hyde-memorial-park
- 740 Hyde Park Rd.



Santa Fe National Forest



LIVE LIFE LOCAL

Embrace the local lingo and cozy up to Santa Fe's charm. Here, life slows down just enough to savor every drop of a refreshing monsoon and every bite of a sweet sopapilla smothered in 'Christmas' chile.

LAND OF ENCHANTMENT

"Land of Enchantment" speaks to a place shaped by the light, the land, history, and culture. A quiet magic that touches your soul. A feeling as timeless as the land itself.

ADOBE

Santa Fe's charm owes much to adobe, a building material fashioned from clay-rich soil, sand, water, and straw. This mixture, shaped into bricks or used as plaster, defines the County's distinctive architecture. Adobe not only complements Santa Fe's landscape but also provides natural insulation, making it a sustainable choice that has shaped the County's character for centuries.

CHRISTMAS

Chile is a must with food in Santa Fe County. It comes in red and green varieties which are both derived from the same pepper. Fresh chile is green and turns red as it dries. Both can be enjoyed as a sauce, and the green pepper is often eaten chopped on cheeseburgers, or stuffed into tamales. When you order at a restaurant and want to try both kinds, just say 'Christmas'.

FAROLITO

During the holidays, Santa Fe County lights up with thousands of brown paper bag lanterns called farolitos. A generations-old tradition, many Santa Feans walk Canyon Road on Christmas Eve where these holiday lights brighten the night. Throughout Santa Fe County communities, farolitos illuminate adobe walls and walkways.

MONSOONS

As the hot and dry summer days give way to dramatic thunderstorms throughout Santa Fe County, the parched landscape is rejuvenated with moisture in the form of monsoons. Monsoons offer welcome respite from the heat, cooling the air and enriching the county's diverse flora and fauna.

SOPAIPILLA

A fluffy, square shaped, deep-fried bread that is enjoyed with honey or butter. These pillowy, delicious treats are the perfect accompaniment to any New Mexican meal.

Nambé Valley | Jacket by Ortega's Weaving Shop, Chimayó

“Take time to look...”

– Georgia O’Keeffe

